

4.1.3 - Number of classrooms and seminar halls with ICT- enabled facilities such as smart class, LMS, etc.

## Physics Department



#### 4.1.3 - Number of classrooms and seminar halls with ICT- enabled facilities such as smart class, LMS, etc.



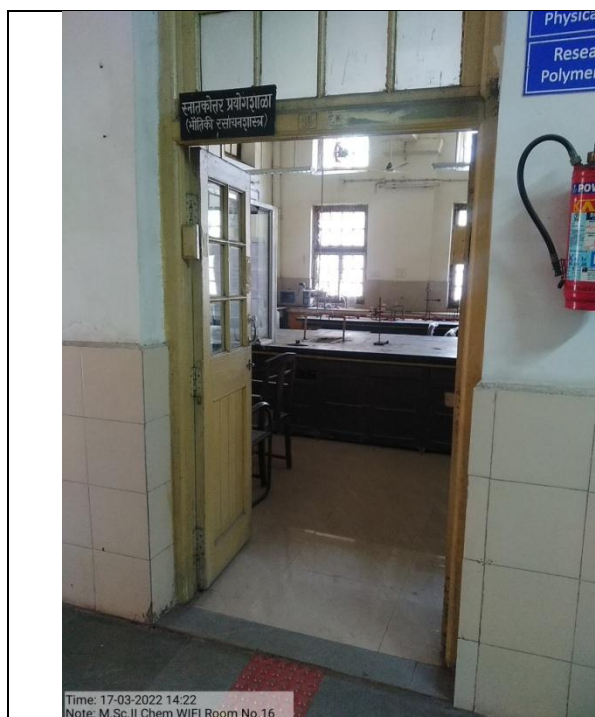


4.1.3 - Number of classrooms and seminar halls with ICT- enabled facilities such as smart class, LMS, etc.

## Chemistry Department

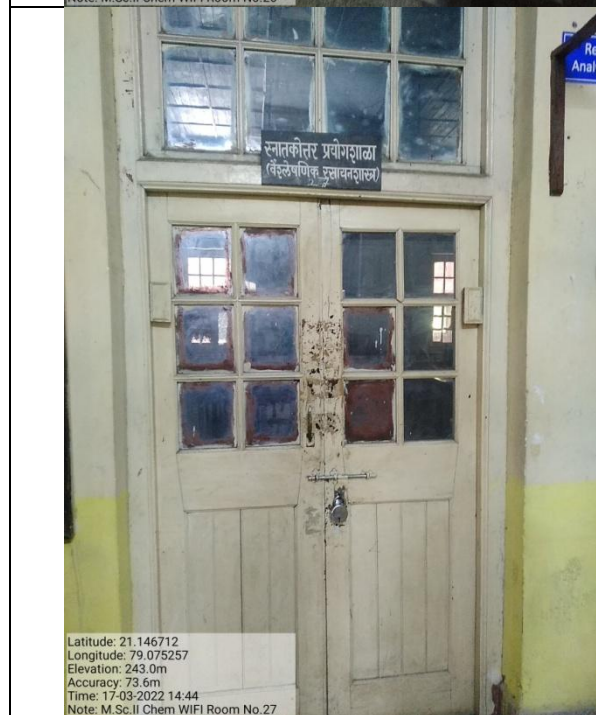
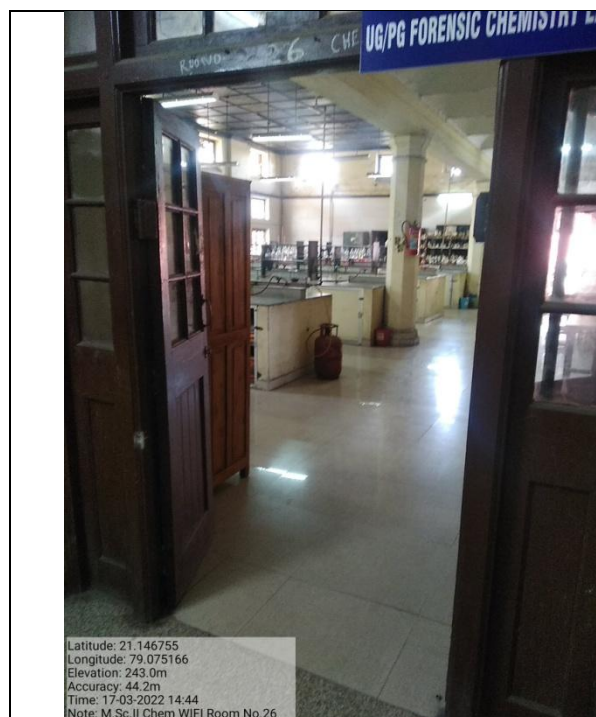


#### 4.1.3 - Number of classrooms and seminar halls with ICT- enabled facilities such as smart class, LMS, etc.





**4.1.3 - Number of classrooms and seminar halls with ICT- enabled facilities such as smart class, LMS, etc.**

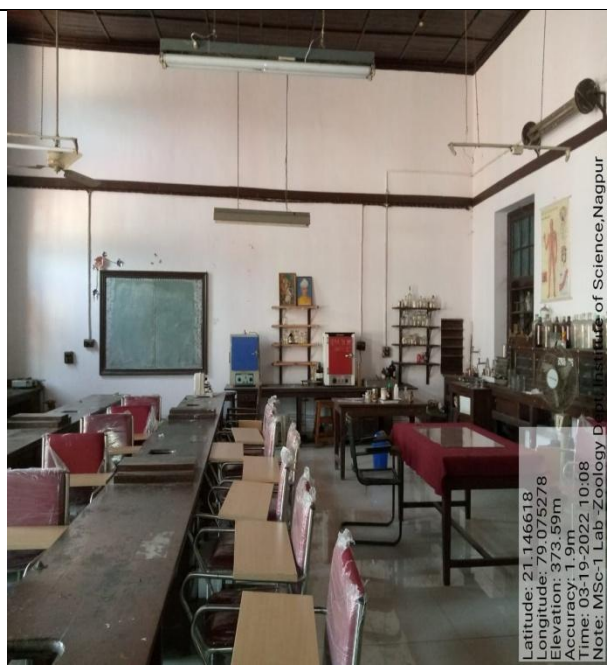


#### 4.1.3 - Number of classrooms and seminar halls with ICT- enabled facilities such as smart class, LMS, etc.



4.1.3 - Number of classrooms and seminar halls with ICT- enabled facilities such as smart class, LMS, etc.

## Zoology Department





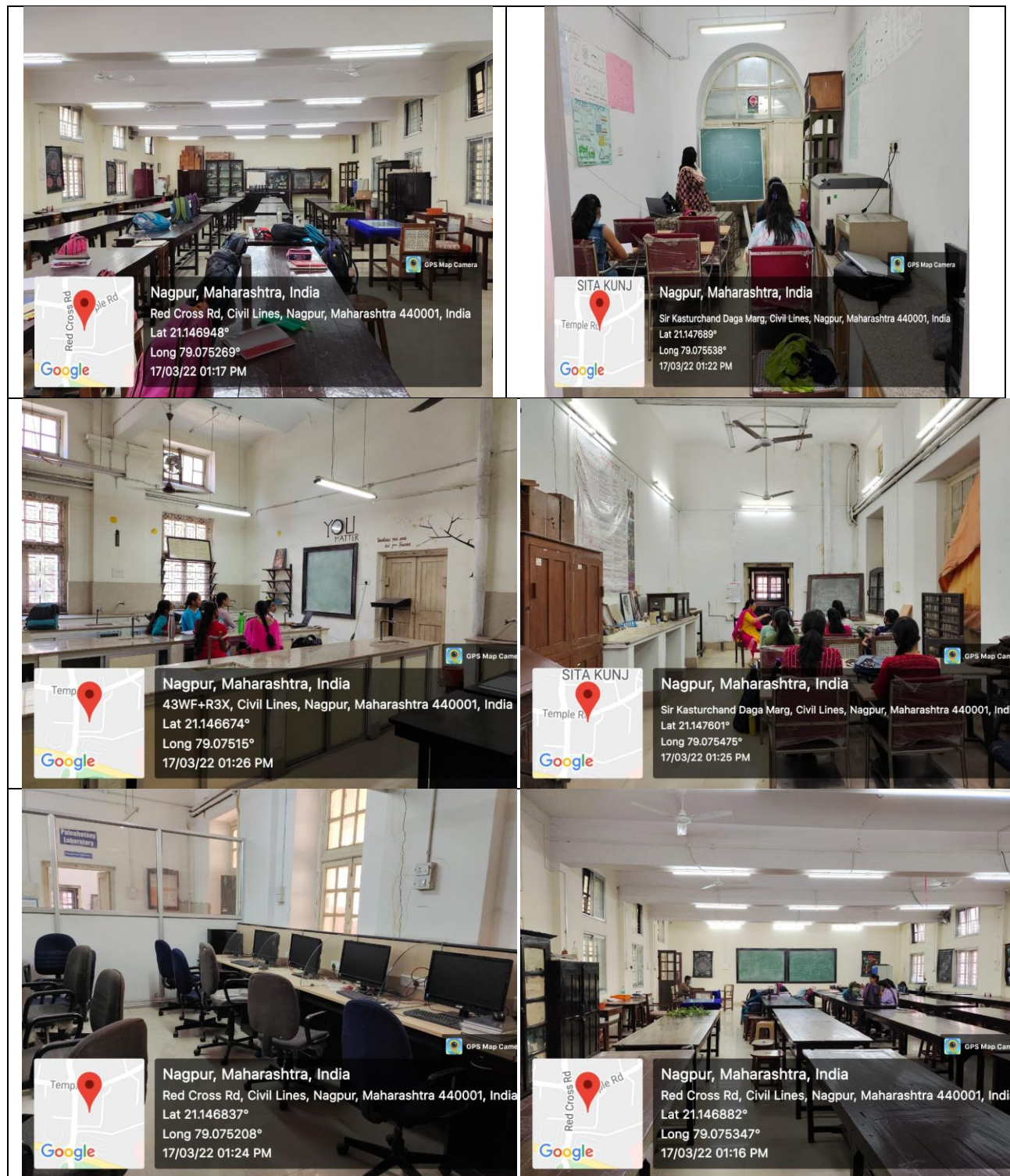
#### 4.1.3 - Number of classrooms and seminar halls with ICT- enabled facilities such as smart class, LMS, etc.



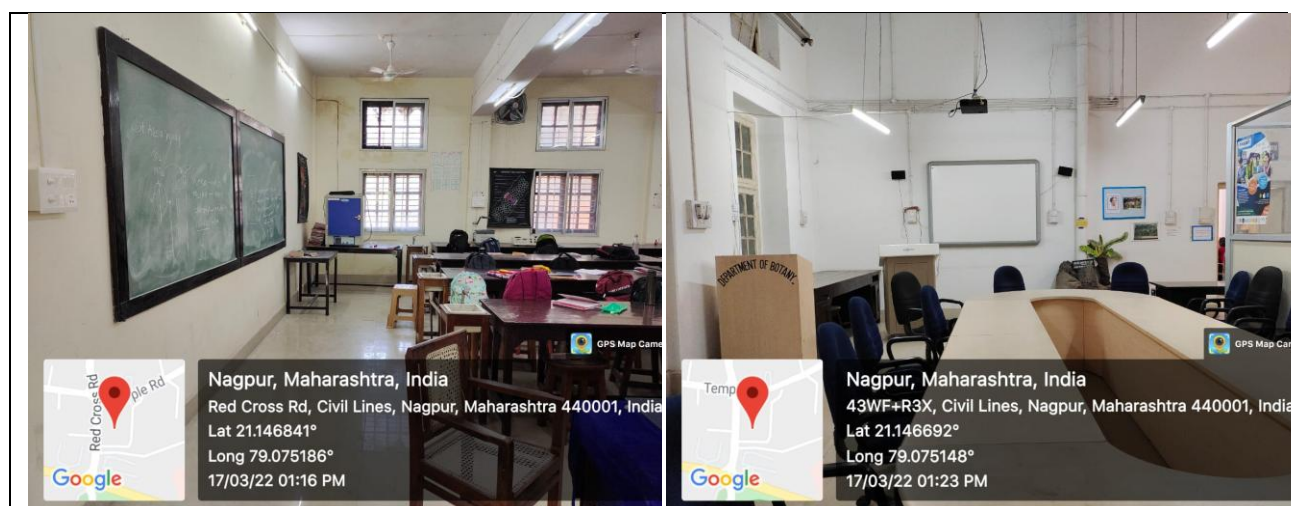


#### 4.1.3 - Number of classrooms and seminar halls with ICT- enabled facilities such as smart class, LMS, etc.

### Botany Department



#### 4.1.3 - Number of classrooms and seminar halls with ICT- enabled facilities such as smart class, LMS, etc.





4.1.3 - Number of classrooms and seminar halls with ICT- enabled facilities such as smart class, LMS, etc.

## Statistics Department



**4.1.3 - Number of classrooms and seminar halls with ICT- enabled facilities such as smart class, LMS, etc.**





4.1.3 - Number of classrooms and seminar halls with ICT- enabled facilities such as smart class, LMS, etc.

## Mathematics Department



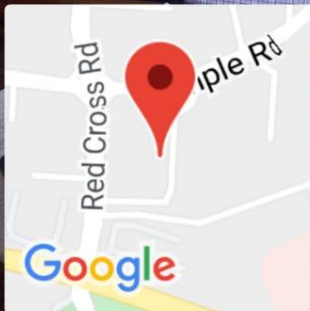
**4.1.3 - Number of classrooms and seminar halls with ICT- enabled facilities such as smart class, LMS, etc.**

## **Computer Science Department**



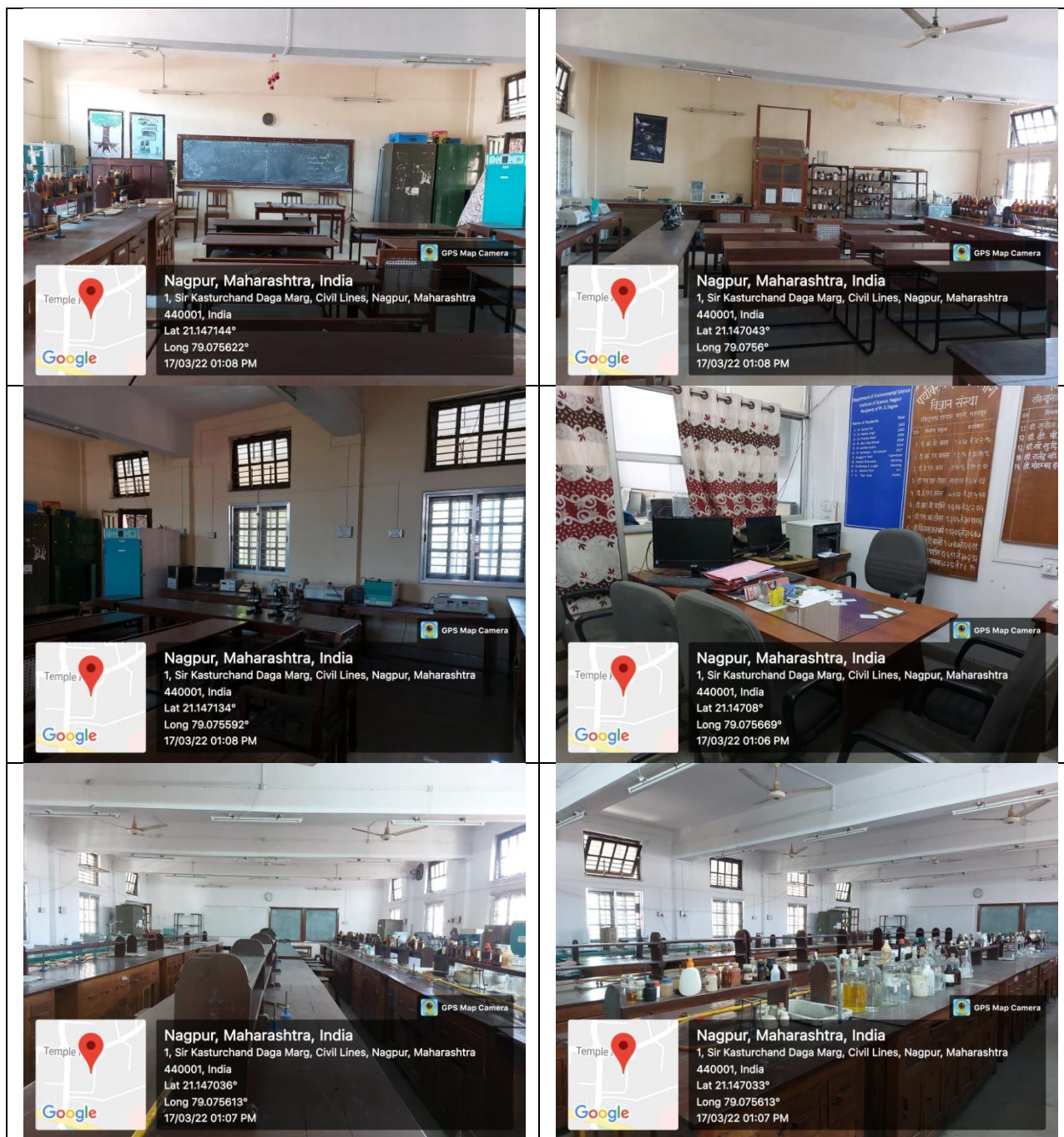


# Electronics Department



4.1.3 - Number of classrooms and seminar halls with ICT- enabled facilities such as smart class, LMS, etc.

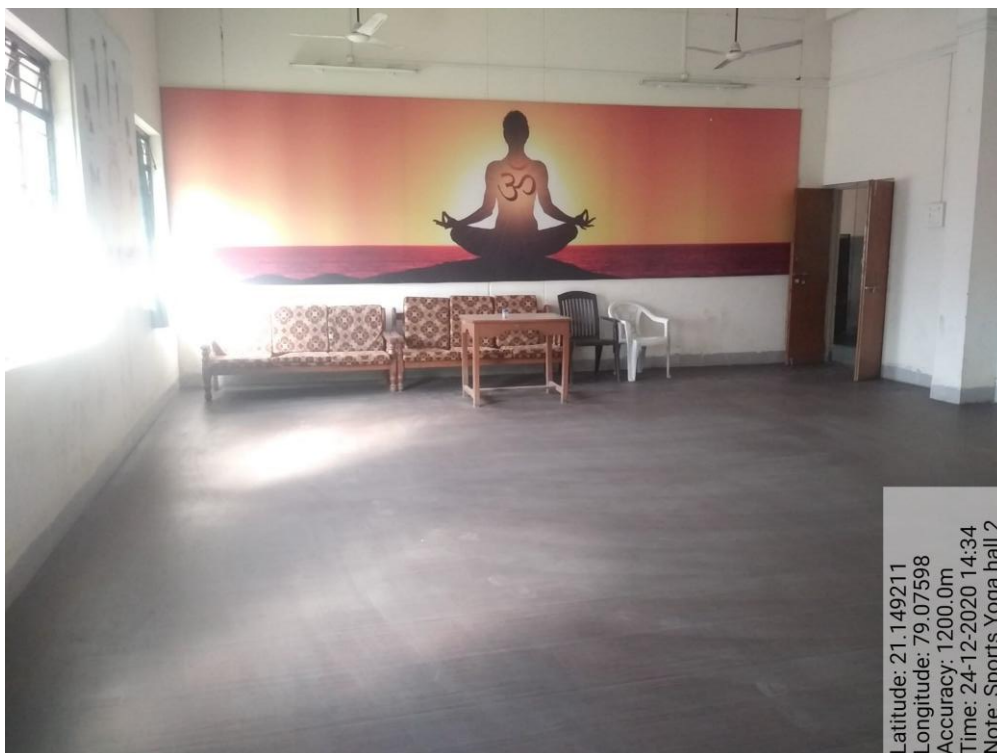
## Environmental Science Department





4.1.3 - Number of classrooms and seminar halls with ICT- enabled facilities such as smart class, LMS, etc.

## Physical Education Department



Latitude: 21.149211  
Longitude: 79.07598  
Accuracy: 1200.0m  
Time: 24-12-2020 14:34  
Note: Sports Yoga hall 2

**4.1.3 - Number of classrooms and seminar halls with ICT- enabled facilities such as smart class, LMS, etc.**

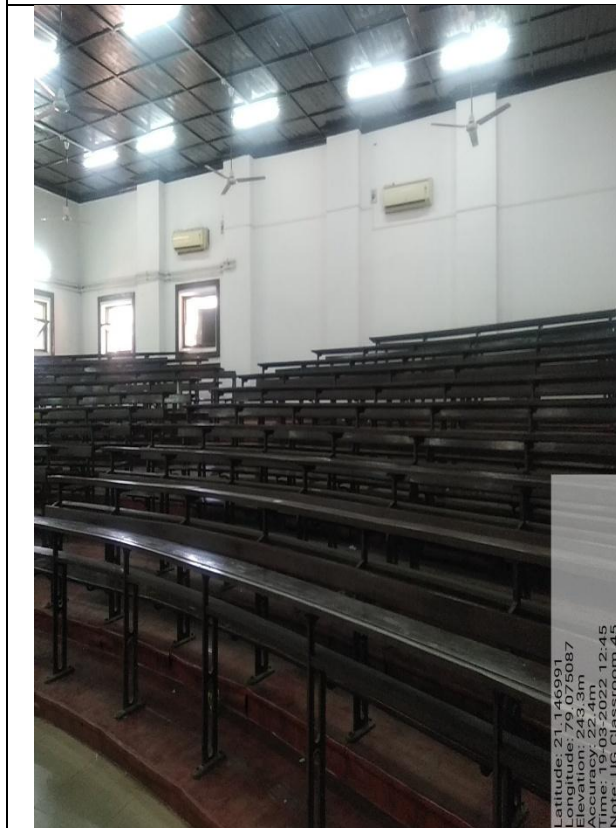
## **IQAC Seminar Hall**





#### 4.1.3 - Number of classrooms and seminar halls with ICT- enabled facilities such as smart class, LMS, etc.

### UG Classroom



#### 4.1.3 - Number of classrooms and seminar halls with ICT- enabled facilities such as smart class, LMS, etc.

